

## Fees and application

### MSc in Clinical Gerontology and End-of-Life Care Programme



	Duration	*Tuition fees
Full-time	1 year	HK\$150,000
Part-time	2 years	HK\$75,000 <i>(paid in two installments)</i>

\*pending for approval

For further enquiries, please contact us from 2 to 5 p.m. (Monday to Friday) at (852) 91687005 and visit our website <http://www.mect.cuhk.edu.hk/postgraduate>

In order to protect the "green environment", online application is only applicable through <https://www.gs.cuhk.edu.hk/admissions/programme/medicine>

Supporting documents should be sent to MSc in Clinical Gerontology and End-of-Life Care programme (FT or PT), 9/F Dept of Medicine & Therapeutics, Lui Che Woo Clinical Sciences Building, Prince of Wales Hospital, Shatin, N.T.

The deadline for application will be 30 April 2023.

### Information Seminar

**Date** : 6 February 2023 (Monday)

**Time** : 7:00 p.m.

**Venue** : Seminar Room 3, 1/F, CUHK Postgraduate Education Center, Prince of Wales Hospital, Shatin, N.T.

If you would like to attend the seminar, please register via <https://bit.ly/3QPDIzg> to reserve a seat



香港中文大學醫學院  
Faculty of Medicine  
The Chinese University of Hong Kong

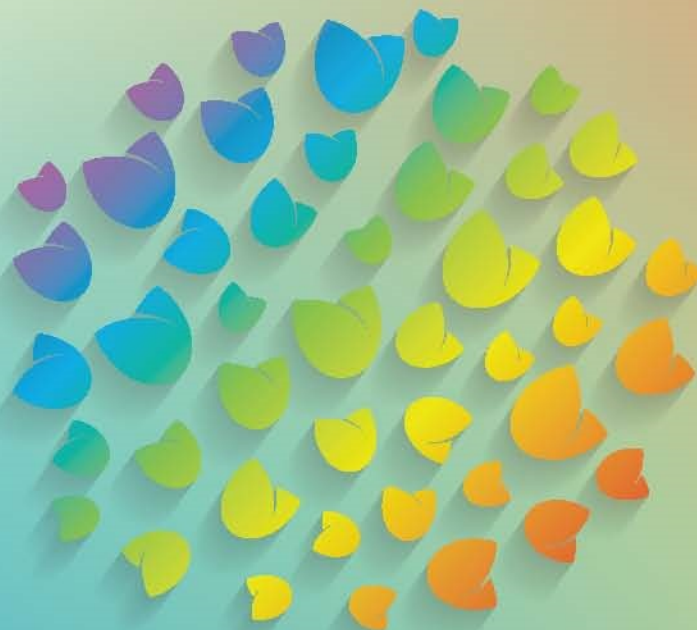


Department of Medicine & Therapeutics, Faculty of Medicine  
THE CHINESE UNIVERSITY OF HONG KONG

## Master of Science in Clinical Gerontology and End-of-Life Care Programme (2023-2024)

1 year full time &

2 years part time mode



Programme Director(s)

Professor Timothy Kwok    Professor Alice Kong

Co-Director(s) and Advisors

Dr. Raymond Lo | Dr. CM Lum | Professor Eliza Wong

## Programme Overview

(29 units in total)

### Required modules

<b>CGEN 5001</b>	<b>Demography, Sociology, Social Work and Health Economics and Psychology of ageing</b>
<b>CGEN 5003</b>	<b>Biology of Ageing &amp; Concept of Successful Ageing and Measurement</b>
<b>CGEN 5004</b>	<b>Service Models for Ageing &amp; Population</b>
<b>ENLC 5001</b>	<b>Principles and Perspectives of End of Life Care</b>
<b>CGEN 5006</b>	<b>Psychospiritual Aspects in Palliative Care</b>
<b>CGEN 5007</b>	<b>Ethical Principles and Dilemmas in End of Life Care</b>
<b>CGEN 5202</b>	<b>Case Studies I</b>
<b>CGEN 5204</b>	<b>Case Studies II</b>
<b>CGEN 6203</b>	<b>Case Studies III</b>
<b>CGEN 6205</b>	<b>Case Studies IV</b>

*Students can choose either CGEN 6900-02 (project report) or CGEN6903-05 (practicum) at the beginning of the study year*

<b>CGEN 6900</b>	<b>Project Report I</b>
<b>CGEN 6901</b>	<b>Project Report II</b>
<b>CGEN 6902</b>	<b>Project Report III</b>
<b>CGEN 6903</b>	<b>Practicum I</b>
<b>CGEN 6904</b>	<b>Practicum II</b>
<b>CGEN 6905</b>	<b>Practicum III</b>

### Electives (total 2 units)

<b>CGEN 5010</b>	<b>Epidemiology and Research Methodology</b>
<b>CGEN 5011</b>	<b>Clinical Topics in Geriatrics</b>
<b>CGEN 5012</b>	<b>Symptom Control and Medical Care in End of Life Care A</b>
<b>CGEN 5013</b>	<b>Symptom Control and Medical Care in End of Life Care B</b>

### Admission requirements

Students should hold a Bachelor's degree in health or social sciences from a recognized university, normally with honours not lower than second class, or completed a course of study in a tertiary educational institution and obtained professional or similar qualifications equivalent to our honours degree. They must also fulfill the 'English Language Proficiency Requirement' as stipulated by the Graduate School before being considered for admission.

### Schedule and venue

On average, the sessions of 2-3 hours will be held every Saturday morning or afternoon for all teaching modules. Classes will be held in the Prince of Wales Hospital.

### Teaching Faculty

Staff from the Faculties of Medicine and Social Sciences of the Chinese University of Hong Kong, as well as the Hospital Authority. A small number of teachers are from other tertiary institutions.

### Assessment

1. The taught components will be assessed by 2-3 written examinations in year 1.
2. The project report will be written up as a thesis and graded as follows :
  - a) For part time students, it is graded at the end of year 2
  - b) For full time students, it is graded at the end of year 1

### Graduate attributes

Graduates are expected to acquire a good understanding of the biological, socioeconomic, epidemiological, and clinical aspects of ageing as well as end of life care issues. They are able to play a role in health care policy decisions regarding the well being of elderly populations, contribute to improvements and maintenance of good standards of care in diverse care settings.